



Le versioni disponibili possono essere a giorno, con porte scorrevoli, con e senza alzatina.

Available versions can be open, with sliding doors, with or without backsplash.

Les versions disponibles peuvent être ouvertes, avec des portes coulissantes, avec ou sans dossier.

Erhältlich in offene oder mit Schiebetüren Versionen, mit oder ohne Aufkantung.

CARATTERISTICHE

FEATURES / CARACTÉRISTIQUES / EIGENSCHAFTEN



- realizzate in acciaio inox
- made of stainless steel
- fabriqué en acier inoxydable
- hergestellt aus Edelstahl



- Fino a 2000 mm
- Up to 2000 mm
- Jusqu'à 2000 mm
- Bis 2000 mm



- Bordo piano 40 mm
- Worktop 40 mm thick and
- Epaisseur du dessus 40 mm
- Plattenkante 40 mm



- Dotati di piedini h. 14/23
- With adjustable feet, h. 14/23
- Pieds réglables d'une hauteur de 14/23
- Mit höhenverstellbaren Füßen H. 14/23 ausgestattet



- Con schiena
- With back
- Avec dos
- Mit Rückwand

DOTAZIONE STANDARD

EQUIPMENT / ÉQUIPMENT / AUSRÜSTUNG



- Con ripiano regolabile
- With shelf
- Avec étagère réglable
- Mit Zwischenfläche



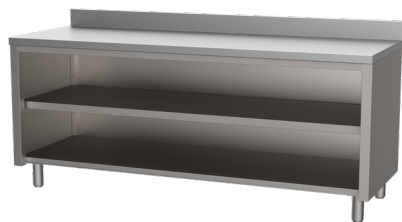
- Con alzatina h 100 mm
- With rear upstand h 100 mm
- Avec dossier h 100 mm
- Mit Aufkantung h 100 mm

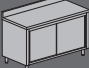

OPTIONAL

OPTIONAL / OPTIONNEL / OPTIONAL

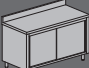



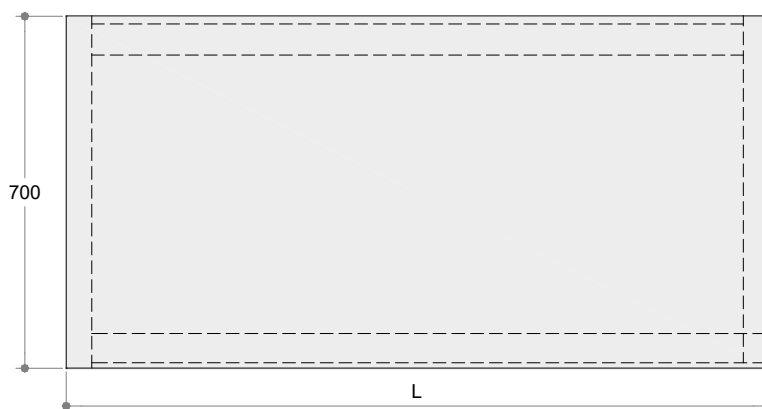
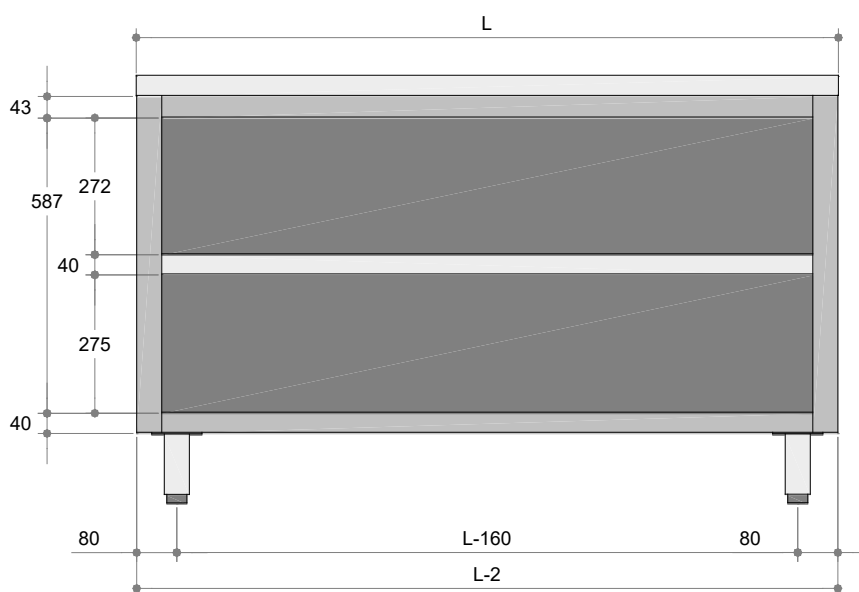
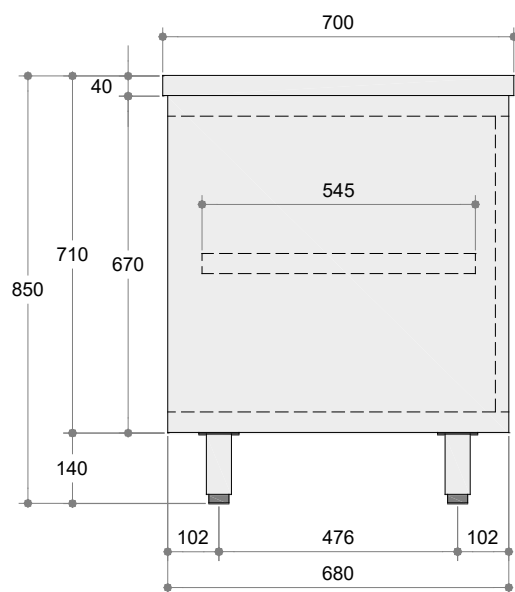
- Con ruote zincate o inox Ø 125
- With galvanized or stainless steel wheels Ø 125
- Avec roues galvanisées ou inox Ø 125
- Mit verzinkten oder Edelstahlrädern Ø 125



| MODELLO MODEL - MODEL - MODELL | | MATERIALE MATERIAL MATÉRIAL WERKSTOFF | DIMENSIONI ESTERNE EXTERNAL DIMENSION - DIMENSIONS EXTERNES - AUSSENABMESSUNGEN | | | |
|---|---|--|---|--|---|-----|
|  |  | | LUNGHEZZA LENGTH - LONGUEUR - LÄNGE | PROFONDITA' DEPTH - PROFON- DEUR - TIEFE | ALTEZZA HEIGHT - HAU- TEUR - HÖHE | |
| TBAG670029 | TBAG670036 | INOX | 800 mm | 700 | 850 | |
| TBAG670030 | TBAG670037 | | 1000 mm | | | |
| TBAG670031 | TBAG670038 | | 1200 mm | | | |
| TBAG670032 | TBAG670039 | | 1400 mm | | | |
| TBAG670033 | TBAG670040 | | 1600 mm | | | |
| TBAG670034 | TBAG670041 | | 1800 mm | | | |
| TBAG670035 | TBAG670042 | | 2000 mm | | | |
| TBAG710029 | TBAG710036 | | 800 mm | | | 890 |
| TBAG710030 | TBAG710037 | | 1000 mm | | | |
| TBAG710031 | TBAG710038 | | 1200 mm | | | |
| TBAG710032 | TBAG710039 | | 1400 mm | | | |
| TBAG710033 | TBAG710040 | | 1600 mm | | | |
| TBAG710034 | TBAG710041 | | 1800 mm | | | |
| TBAG710035 | TBAG710042 | | 2000 mm | | | |



| MODELLO MODEL - MODEL - MODELL | | MATERIALE MATERIAL MATÉRIAL WERKSTOFF | DIMENSIONI ESTERNE EXTERNAL DIMENSION - DIMENSIONS EXTERNES - AUSSENABMESSUNGEN | | | |
|---|---|--|---|--|---|-----|
|  |  | | LUNGHEZZA LENGTH - LONGUEUR - LÄNGE | PROFONDITA' DEPTH - PROFON- DEUR - TIEFE | ALTEZZA HEIGHT - HAU- TEUR - HÖHE | |
| TBAG670043 | TBAG670050 | INOX | 800 mm | 700 | 850 | |
| TBAG670044 | TBAG670051 | | 1000 mm | | | |
| TBAG670045 | TBAG670052 | | 1200 mm | | | |
| TBAG670046 | TBAG670053 | | 1400 mm | | | |
| TBAG670047 | TBAG670054 | | 1600 mm | | | |
| TBAG670048 | TBAG670055 | | 1800 mm | | | |
| TBAG670049 | TBAG670056 | | 2000 mm | | | |
| TBAG710043 | TBAG710050 | | 800 mm | | | 890 |
| TBAG710044 | TBAG710051 | | 1000 mm | | | |
| TBAG710045 | TBAG710052 | | 1200 mm | | | |
| TBAG710046 | TBAG710053 | | 1400 mm | | | |
| TBAG710047 | TBAG710054 | | 1600 mm | | | |
| TBAG710048 | TBAG710055 | | 1800 mm | | | |
| TBAG710049 | TBAG710056 | | 2000 mm | | | |



L=800...2000

